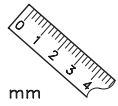
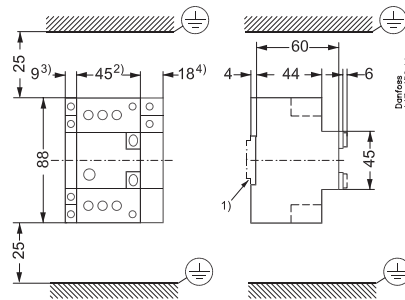


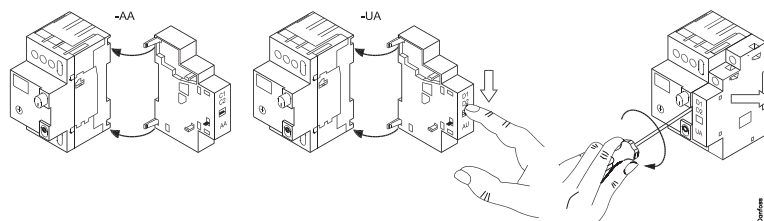
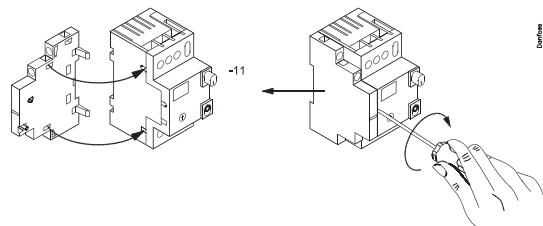
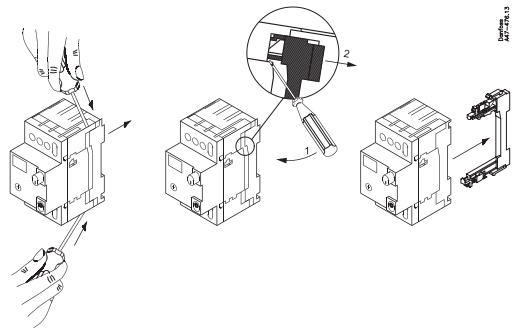
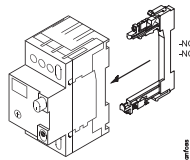
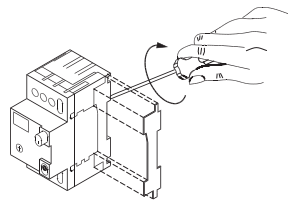
Wyłączniki silnikowe CTI 15 20-25A oraz styki pomocnicze CBI

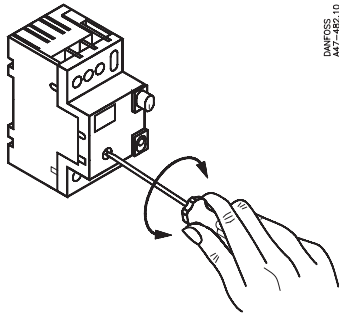
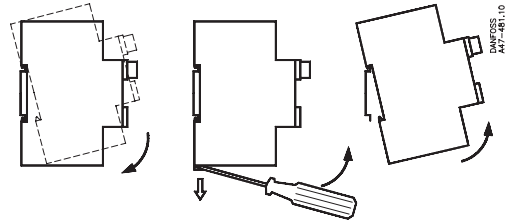
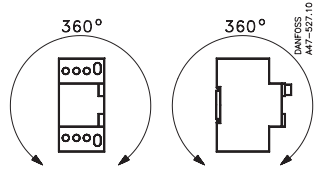
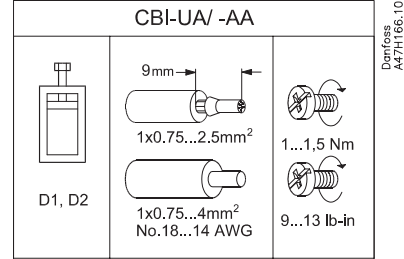
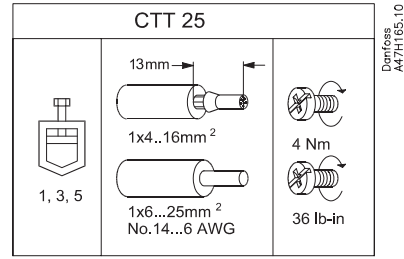
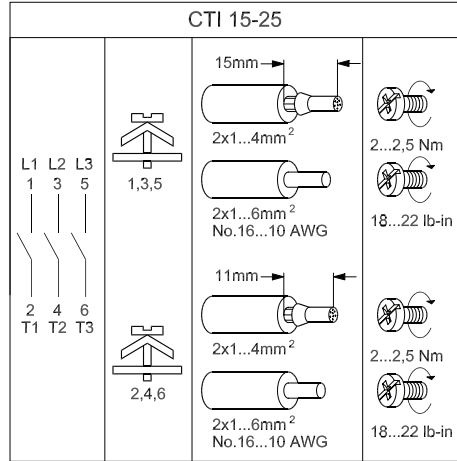


mm

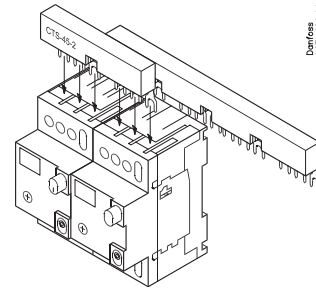
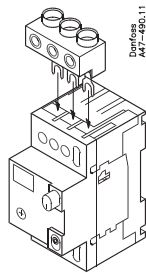


- 1) EN 50022
- 2) CTI 15
- 3) CBI - 11
- 4) CBI - UA / AA





CTI 15		220-240V	400/415V	500V
		gG, aM	gG, aM	fG, aM
25	20-25A	80A	80A	80A



Uwaga

Demontaż wyłącznika należy przeprowadzać po wcześniejszym odłączeniu napięcia.
W przypadku wykrycia uszkodzenia, należy niezwłocznie dokonać wymiany uszkodzonych elementów.