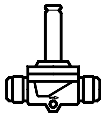


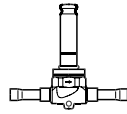
032R9500

032R9500

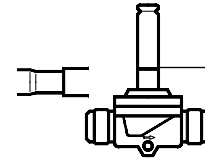
Refrigerants CFC, HCFC, HFC



EVR 2, 3, 4, 6, 8, 10 (NC flare)

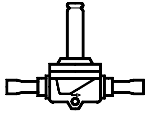


EVR 6, 10 (NO solder)

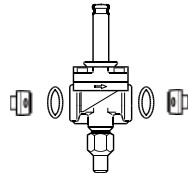


EVR 6, 10 (NO)

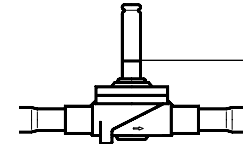
Note: tube construction



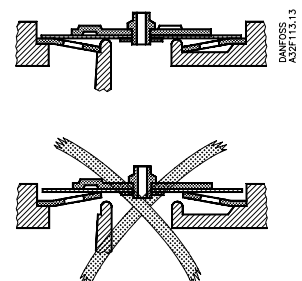
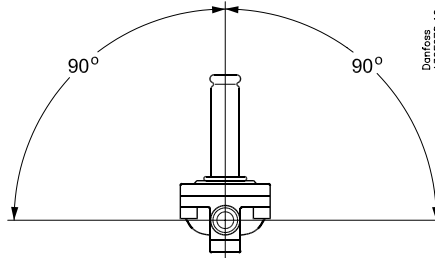
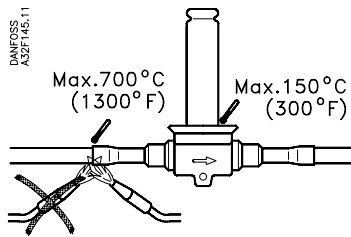
EVR 2, 3, 4, 6, 8, 10 (NC solder)



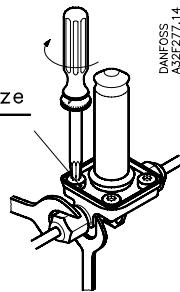
EVR 15, 20 (NC)



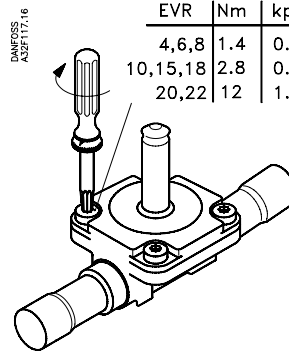
EVR 15 (NO solder)



EVR	Nm	kpm	ft-lbs	Torx size
2-3	1.4	0.15	1	T 15



EVR	Nm	kpm	ft-lbs	Torx size
4,6,8	1.4	0.14	1	T 20
10,15,18	2.8	0.3	2	T 25
20,22	12	1.2	9	T 40



9 W a.c. EVR 2 $t_{max.} 40^{\circ}C$ (105°F)

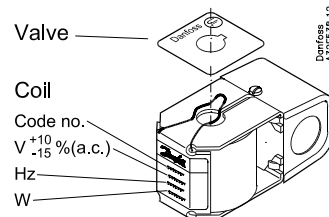
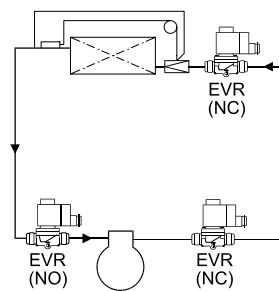
10/12 W a.c. $t_{max.} 80^{\circ}C$ (175°F)

20 W d.c. $t_{max.} 50^{\circ}C$ (120°F)

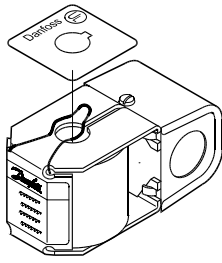
10 W a.c. $t_{max.} 55^{\circ}C$ (130°F)

$t_{min.} -40^{\circ}C$ (-40°F)

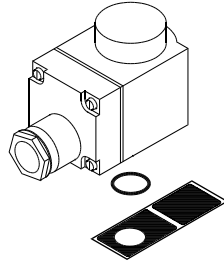
Min. medium temperature: $-40^{\circ}C$ (-40°F)
 Max. medium temperature: $105^{\circ}C$ (221°F)
 Max. working pressure: EVR2-10 PB=35bar
 Max. working pressure: EVR15-22 PB=32bar
 Max. opening diff. pressure (MOPD):



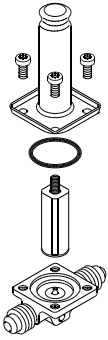
Caution
 Wiring and fusing (when used) must comply with prevailing local and national wiring codes and ordinances.



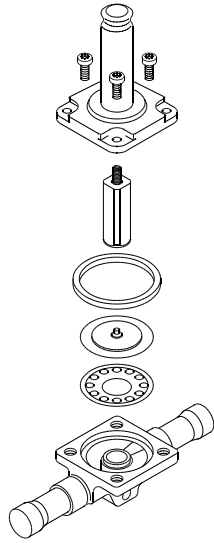
Danfoss



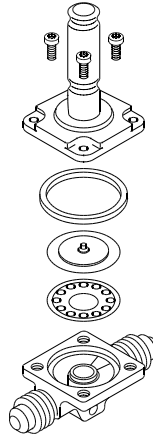
Danfoss
A32F589.10



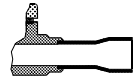
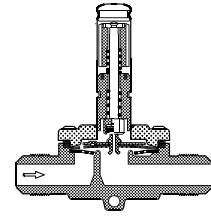
EVR 2, 3 (NC)



EVR 4 - 22 (NC)

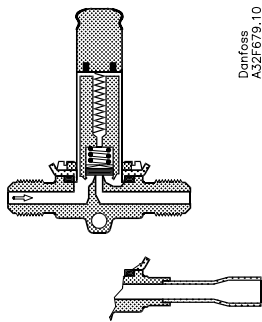


EVR 6 - 20 (NO)



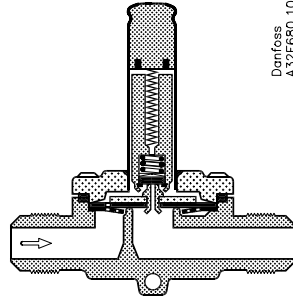
Danfoss
A32F682.10

EVR 6 - 20 (NO)



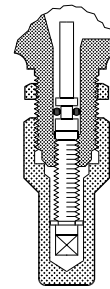
Danfoss
A32F679.10

EVR 3 (NC)

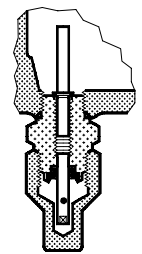


Danfoss
A32F680.10

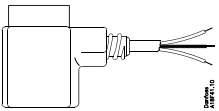
EVR 4 - 22 (NC)



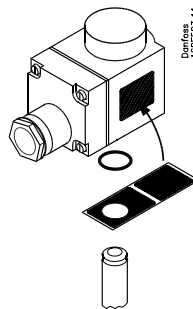
EVR 4 - 10 (NC)



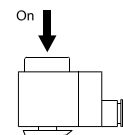
EVR 15 - 22 (NC)



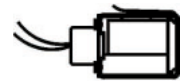
Danfoss
A32F589.10



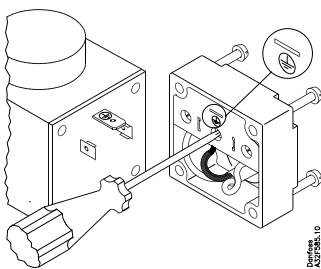
Danfoss
A6F503.11



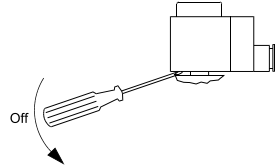
On
Danfoss
A32F589.10



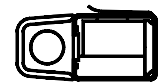
Conduit coil



Danfoss
A32F589.10



Off



Junction box