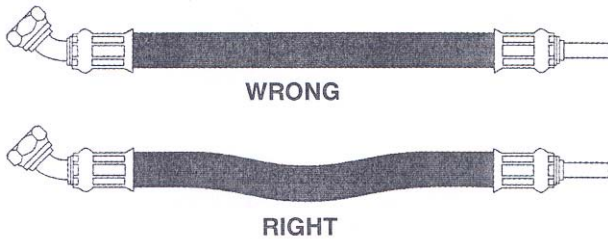


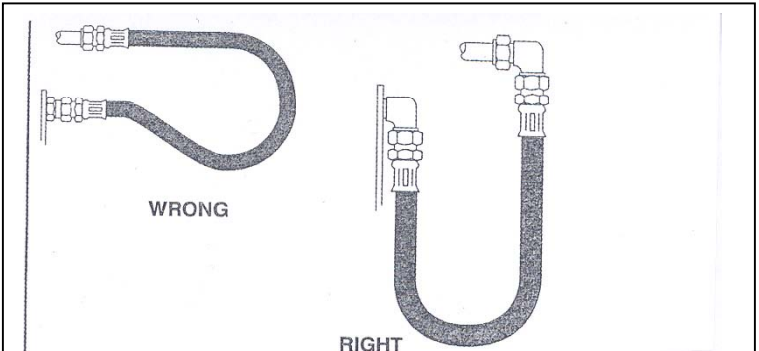
## HOSE ASSEMBLY LAYOUT TIPS

### Right & Wrong

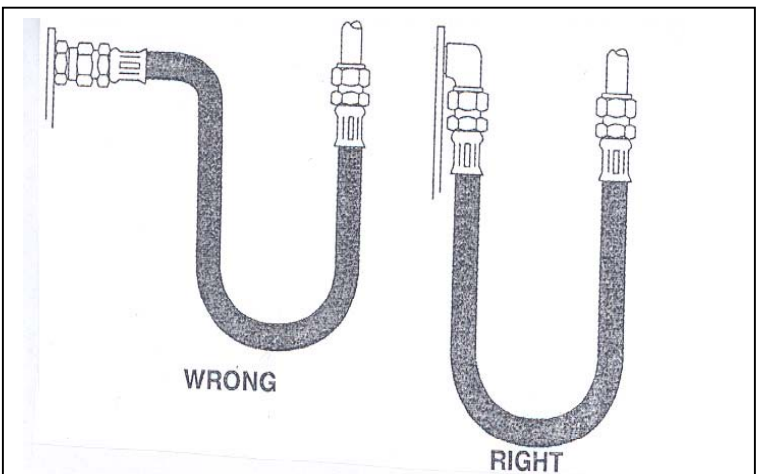
Correct hose installation is essential for satisfactory performance. A too long hose will involve extra costs, and the installation will appear disorganized. Too short hose connections will not allow adequate flexing and length variations required for expansion or contraction, and the hose service life will thus be reduced. The following diagrams show correct hose installations providing maximum performance and cost savings. Check with these examples when fixing the length of a specific assembly.



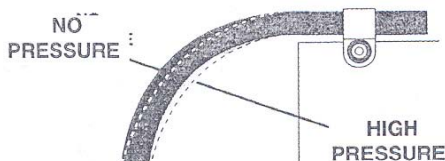
Allow the hose to slacken at straight hose installations to provide for length variations when applying pressure.



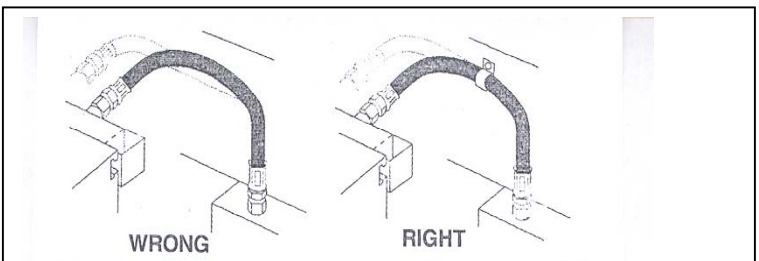
At radius below required minimum, angle adaptor must be used to prevent sharp bends.



Use proper angle adaptors to avoid sharp twist or bend of hose



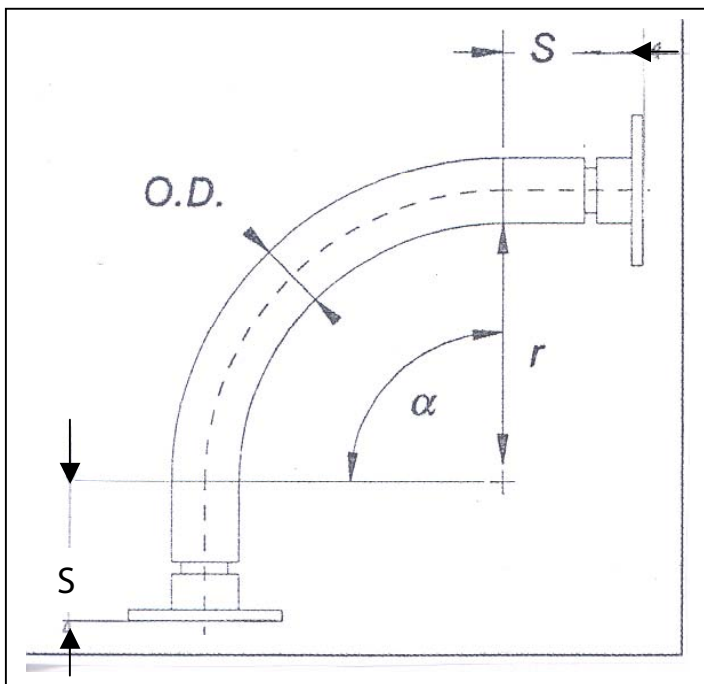
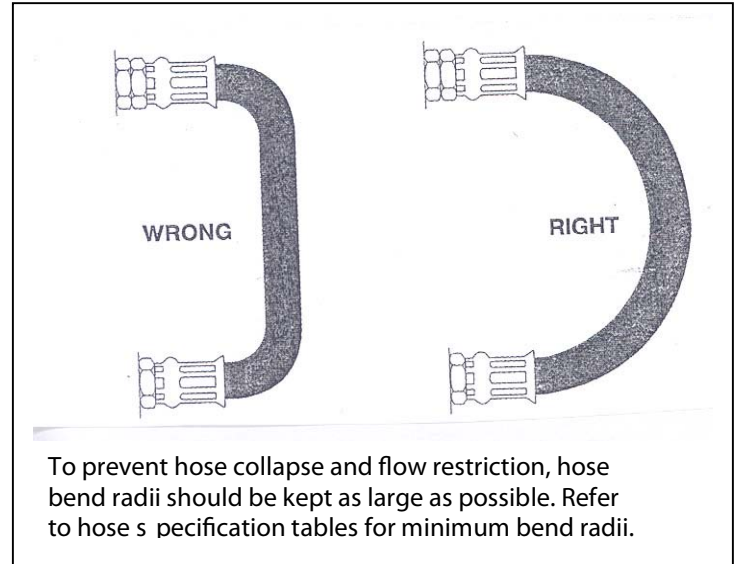
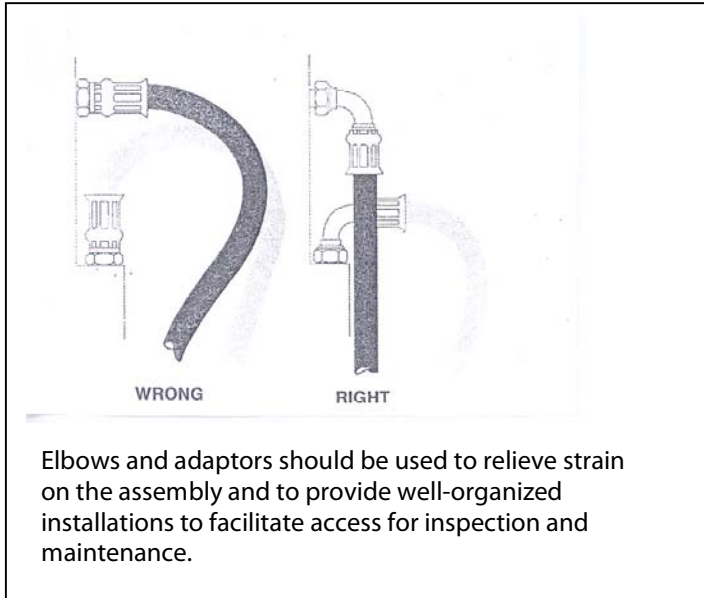
To allow hose to expand when pressurized, clamps should not be used at bends. Do not clamp high and low pressure lines together.



Hoses required bent over two planes must be clamped at change of plane to prevent twisting

## HOSE ASSEMBLY LAYOUT TIPS

### Right & Wrong



#### Hose specification tables:

O.D.	S	r	Max. pressure
1"	87 mm	153 mm	80 bar
2"	160 mm	630 mm	80 bar
3"	100 mm	170 mm	6 bar

Danfoss can accept no responsibility for possible errors in catalogues, brochures and other printed material. Danfoss reserves the right to alter its products without notice. This also applies to products already on order provided that such alterations can be made without subsequential changes being necessary in specifications already agreed. All trademarks in this material are property of the respective companies. Danfoss and the Danfoss logotype are trademarks of Danfoss A/S. All rights reserved.