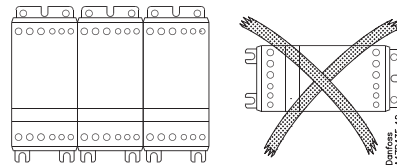
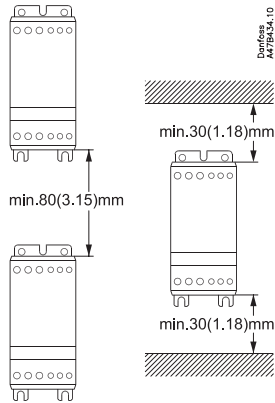


Montaż - Mounting - Montage



mm (inch)



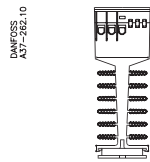
PL Jeżeli urządzenie zamontowane jest w poziomie, prąd znamionowy wynosi 50% wartości nominalnej
UK If unit is mounted horizontally derate current by 50%
D Falls Einheit horizontal montiert wird, reduziert sich der Strom um 50%.



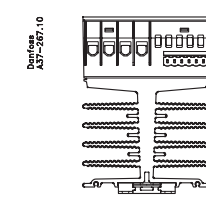
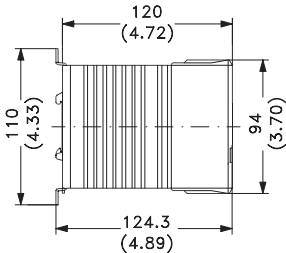
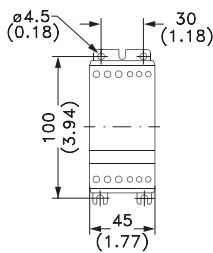
PL Radiator należy utrzymywać w czystości oraz nie należy zakłócać przepływu powietrza chłodzącego
UK Keep heat sink clean. Airflow should not be blocked
D Kühlfächen freihalten. Luftstrom muß ungehindert fließen

Wymiary - Dimensions - Abmessungen

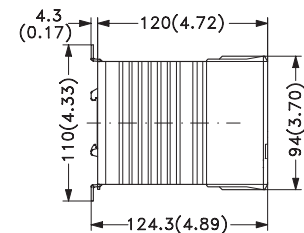
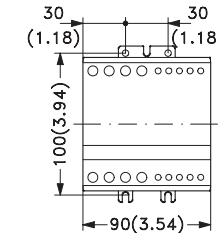
mm (inch)



MCI 15C



MCI 25C



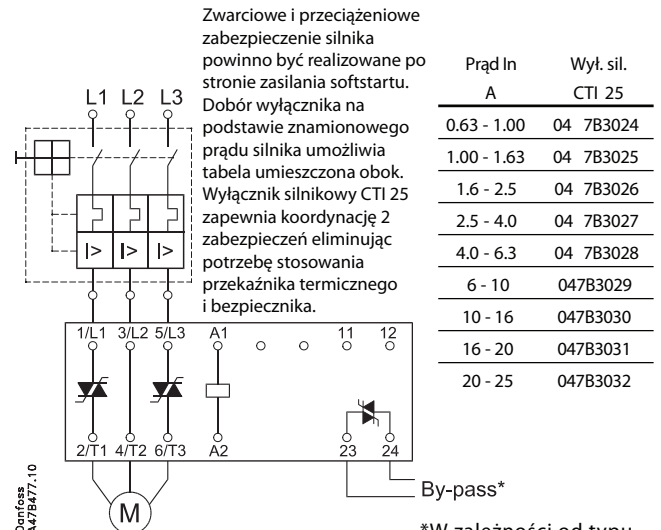
Ustawienia-Setting-Einstellung-Réglage

PL Brak możliwości dokonywania nastaw. Czas rozbieg: 0,6s.
UK Soft start parameters not adjustable. Start-up max. 0.6 sec.

D Softstart Parameter nicht einstellbar. Anlaufzeit max. 0.6 Sek.
F Paramètre non ajustables, temps de démarrage max = 0.6 s

Podłączenie - Wiring - Verdrahtung

75°C Kabel/Wire*	mm ² (AWG)	mm ² (AWG)
	0.75 - 4 (18 - 12)	0.5 - 1.5 (20 - 16)
	2 x 1 (2 x 18)	2 x 0.5 - 0.75 (2 x 20 - 18)
	0.75 - 6 (18 - 10)	0.5 - 1.5 (20 - 16)
	2 x 0.75 - 2.5 (2 x 18 - 14)	2 x 0.5 - 1.5 (2 x 20 - 16)
	0.75 - 6 (18 - 10)	0.5 - 1.5 (20 - 16)
	2 x 0.75 - 1.5 (2 x 18 - 16)	2 x 0.5 - 1.5 (2 x 20 - 16)
	Pozidrive 1 0.5 Nm max. 4.4 lb-in max.	N.A.
	4 mm 0.5 Nm max. 4.4 lb-in max.	3 mm 0.5 Nm max. 4.4 lb-in max.



* Używać jedynie przewodów miedzianych
** Aprobata UL

CS US
LISTED

UL: Use thermal overload protection as required by the National Electric Code
UL: When protected by a non-time delay K5 or H Class fuse, rated 266% of motor FLA, this device is rated for use on a circuit capable of delivering not more than 5,000 rms. symmetrical amperes, 600 V maximum. Maximum surrounding temperature 40°C

*W zależności od typu
Depends on the type
Abhängig vom Typ
Suivant modèles