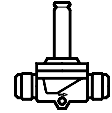
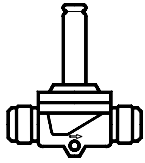


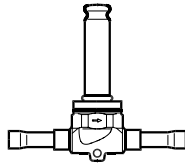
## EVR 2 - 22, Normally Closed/Normally Open (NC/NO)



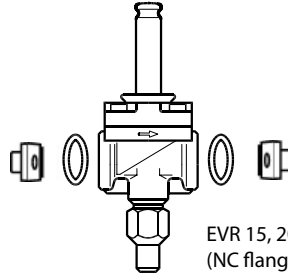
Refrigerants CFC, HCFC, HFC



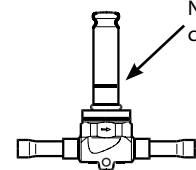
EVR 2, 3, 4, 6, 8, 10 (NC flare)



EVR 6, 10 (NC solder)

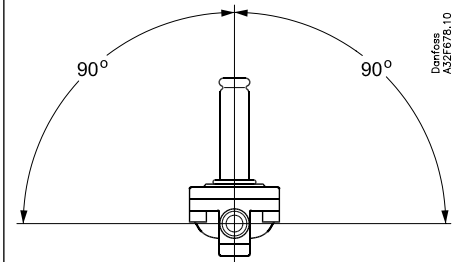
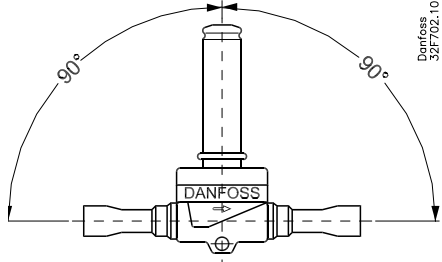
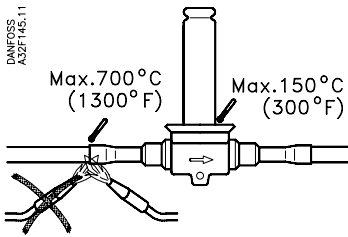


EVR 15, 20 (NC flange)

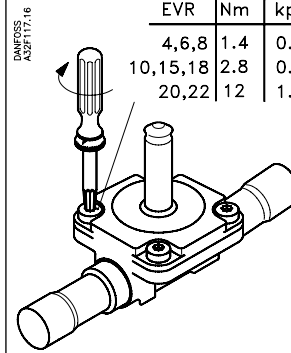
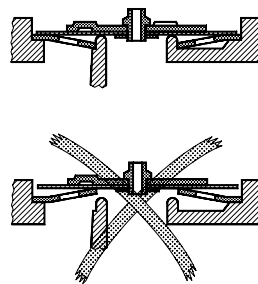
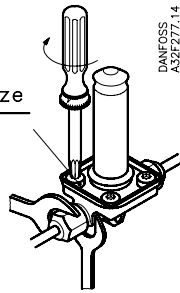


EVR 2, 3, 4, 6, 8, 10 (NO solder)

Note: Tube construction

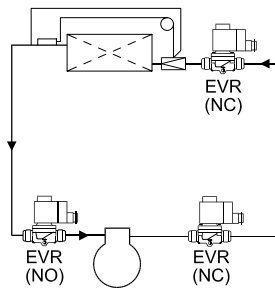


EVR	Nm	kpm	ft-lbs	Torx size
2-3	1.4	0.15	1	T 15

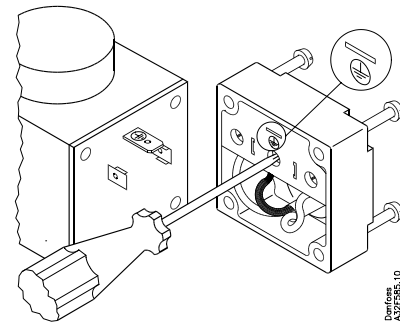


EVR	Nm	kpm	ft-lbs	Torx size
4,6,8	1.4	0.14	1	T 20
10,15,18	2.8	0.3	2	T 25
20,22	12	1.2	9	T 40

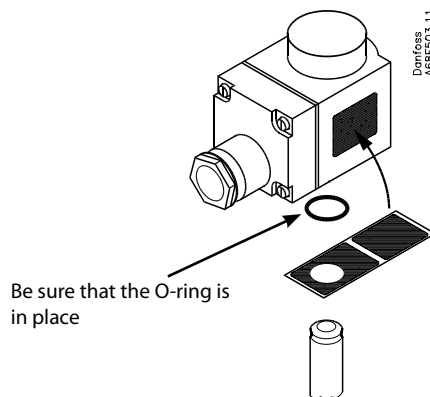
- 9 W a.c. EVR 2  $t_{max.} 40^{\circ}C$  (105°F)
- 10/12 W a.c.  $t_{max.} 80^{\circ}C$  (175°F)
- 20 W d.c.  $t_{max.} 50^{\circ}C$  (120°F)
- 10 W a.c.  $t_{max.} 55^{\circ}C$  (130°F)
- $t_{min.} -40^{\circ}C$  (-40°F)



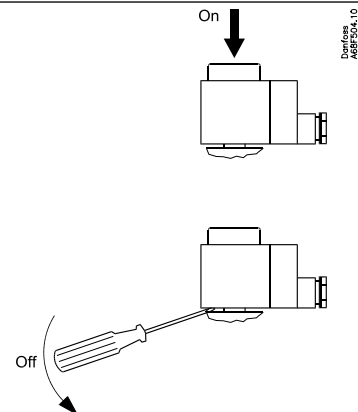
Min. medium temperature:  $-40^{\circ}C$  (-40°F)  
 Max. medium temperature:  $105^{\circ}C$  (221°F)  
 Max. working pressure: EVR2-10 PB=35bar  
 Max. working pressure: EVR15-22 PB=32bar  
 Max. opening diff. pressure (MOPD):  $\rightarrow$



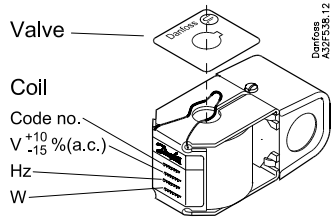
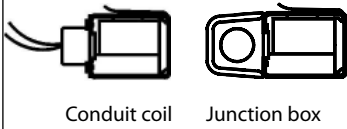
**Warning**  
 Never switch on power to the coil when the coil is dismantled from the valve. Otherwise the coil may be damaged and there is risk of injuries and burns



Be sure that the O-ring is in place

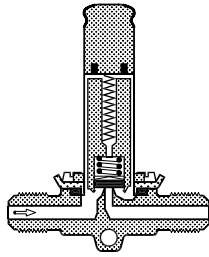
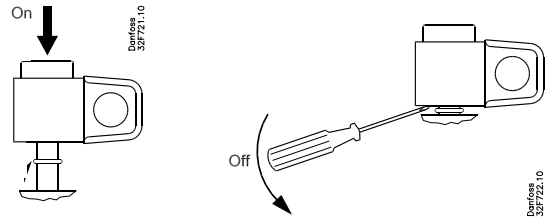


UL approved coils



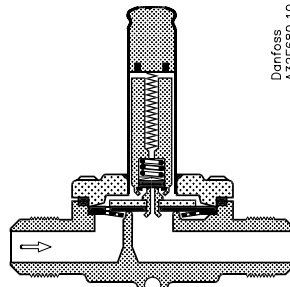
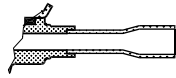
**Caution**  
Wiring and fusing (when used) must comply with prevailing local and national wiring codes and ordinances

UL approved coils



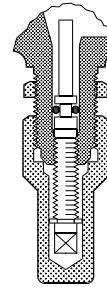
Danfoss  
A32F679.10

EVR 3 (NC)

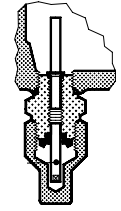


Danfoss  
A32F680.10

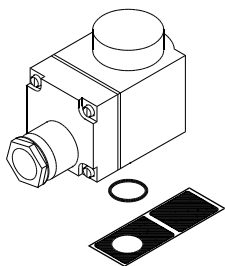
EVR 4 - 22 (NC)



EVR 4 - 10 (NC)

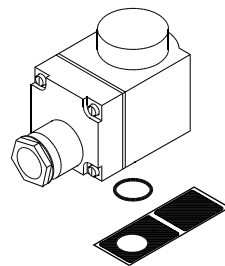
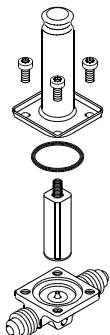


EVR 15 - 22 (NC)



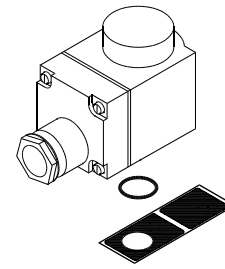
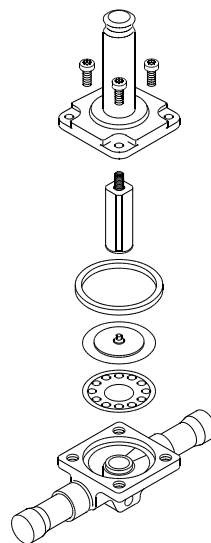
Danfoss  
A32F689.10

EVR 2, 3 (NC)



Danfoss  
A32F589.10

EVR 4 - 22 (NC)



Danfoss  
A32F589.10

EVR 6 - 20 (NO)

