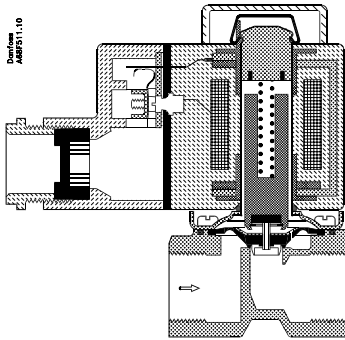


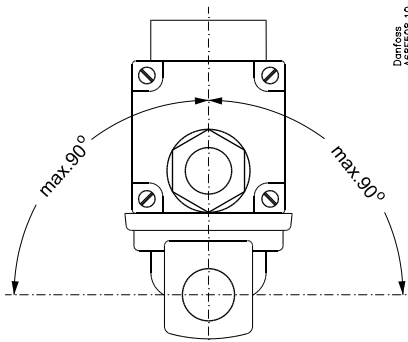
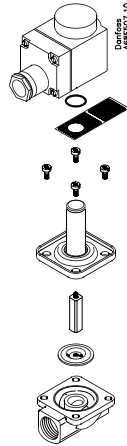
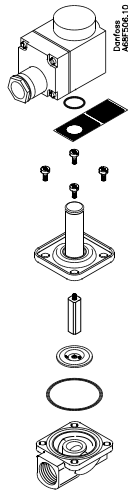
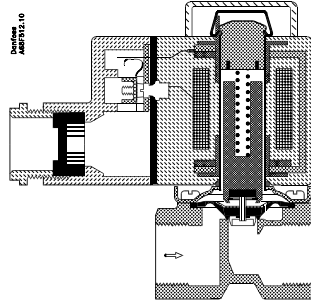
068R9545

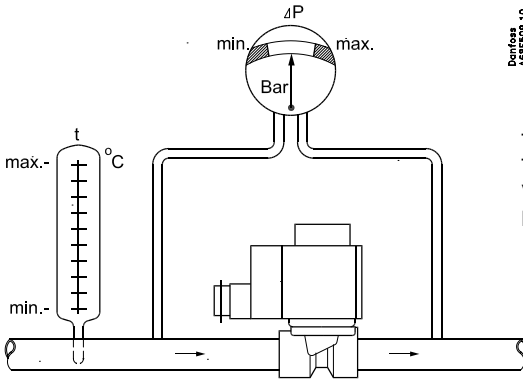
068R9545

### EVSR 10



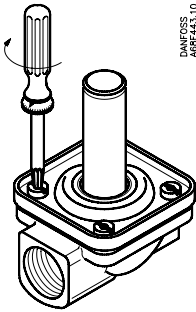
### EVSR 12, 14, 18, 22





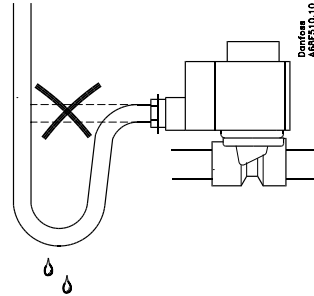
Danfoss  
ABSF3.10

$T_{amb}$  = +50°C max.  
 $T_{medium}$  = -35 → +60°C  
 Viscosity = 50 cST. max.  
 Max. test pressure = 16 bar



Danfoss  
ABSF4.3.10

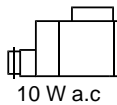
| EVSR | Nm  | kpm  | ft-lbs |
|------|-----|------|--------|
| 10   | 1.4 | 0.14 | 1.0    |
| 12   | 2.8 | 0.28 | 2.0    |
| 14   | 2.8 | 0.28 | 2.0    |
| 18   | 4.5 | 0.45 | 3.2    |
| 22   | 4.5 | 0.45 | 3.2    |



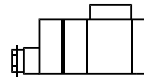
Danfoss  
ABSF3.10.10

**NC**

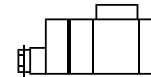
$\Delta p$   
bar



10 W a.c.



12 W a.c.



20 W d.c.

min.

max.

min.

max.

min.

max.

EVSR 10, 12  
14, 18, 22

0.1

5.0

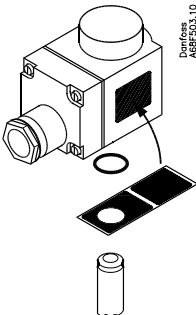
0.1

5.0

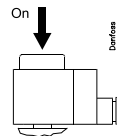
0.1

5.0

**Clip-on**

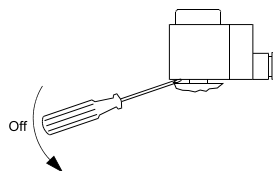


Danfoss  
ABSF3.10.10



On

Danfoss  
ABSF3.10.10



Off