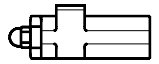




INSTRUCTIONS

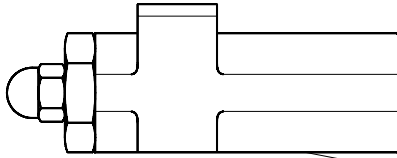
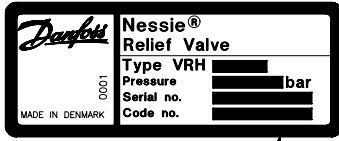
Nessie® Pressure Relief Valve VRH 60



180R9005

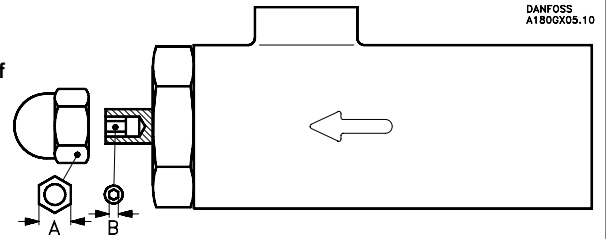
180R9005

Identifikation
Identification
Identifizierung
Identification



DANFOSS
A180G54.12

Nøglevidde
Key size
Schlüsselweite
Ouverture de clef



DANFOSS
A180G205.10

	A	B
Metrisk version	19	6
SAE-version	.748	.236

Montage

Ventilen er konstrueret til rørledningsmontage

Mounting

The valve is mounted in-line, and is fixed by means of the system's piping.

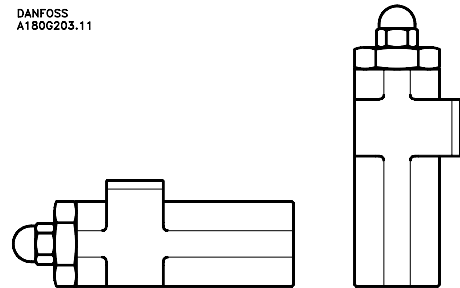
Montage

Das Ventil ist für die Rohrleitungsmontage konzipiert.

Montage

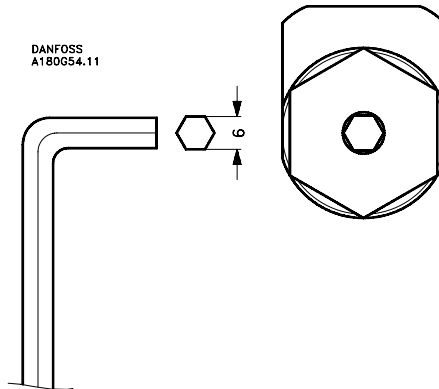
Le limiteur est conçu pour le montage dans le tuyautage

DANFOSS
A180G203.11



Trykindsstilling
Pressure setting
Druckeinstellung
Réglage du pression

DANFOSS
A180G54.11



CW = Øge tryk
Increase pressure
Druck erhöhen
Augmenter la pression

CCW = Mindske tryk
Decrease pressure
Druck verkleinern
Réduire la pression

Max. tilspændingsmoment

med stålskive: 60 Nm (530 lbs in)

Max. tightening torque

With steel washer: 60 Nm (530 lbs in)

Couple de serrage maxi

avec rondelle acier: 60 Nm (530 lbs in)

Max. Anzugsmoment

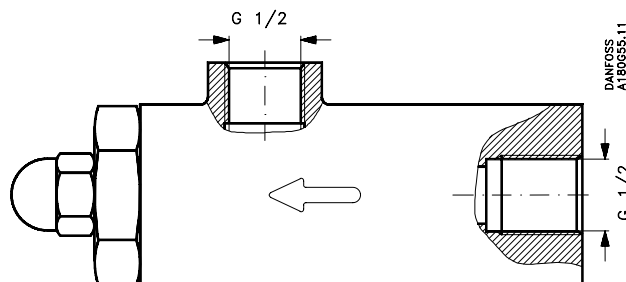
Mit Stahlunterlagsscheibe: 60 Nm (530 lbs in)

Gevindestørrelse

Thread size

Gewindegröße

Dimensions des filetage



DANFOSS
A180G55.11