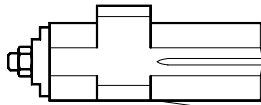
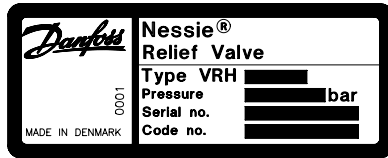


180R9032

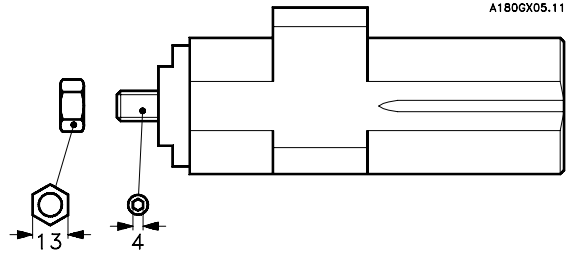
180R9032

**Identifikation**  
**Identification**  
**Identifizierung**  
**Identification**



DANFOSS  
A180GX19.10

**Nøglevidde**  
**Key size**  
**Schlüsselweite**  
**Ouverture de clef**



DANFOSS  
A180GX05.11

**Montage**

Ventilen er konstrueret til rørledningsmontage

**Mounting**

The valve is mounted in-line, and is fixed by means of the system's piping.

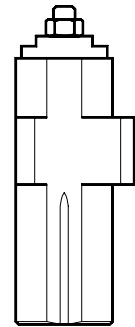
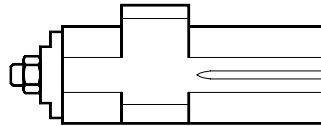
**Montage**

Das Ventil ist für die Rohrleitungsmontage konzipiert.

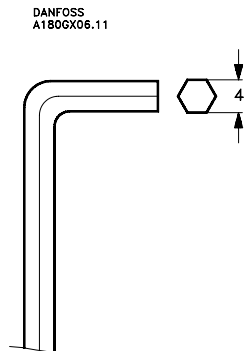
**Montage**

Le limiteur est conçu pour le montage dans le tuyautage

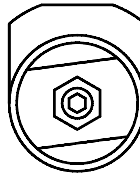
DANFOSS  
A180GX20.10



**Trykindsstilling**  
**Pressure setting**  
**Druckeinstellung**  
**Réglage du pression**



DANFOSS  
A180GX06.11



CW = Øge trykket  
 Increase pressure  
 Druck erhöhen  
 Augmenter la pression

CCW = Mindske trykket  
 Decrease pressure  
 Druck verkleinern  
 Réduire la pression

**Max. tilspændingsmoment**

med stålskive: 30 Nm (270 lbs in)

**Max. tightening torque**

With steel washer: 30 Nm (270 lbs in)

**Couple de serrage maxi**

avec rondelle acier: 30 Nm (270 lbs in)

**Max. Anzugsmoment**

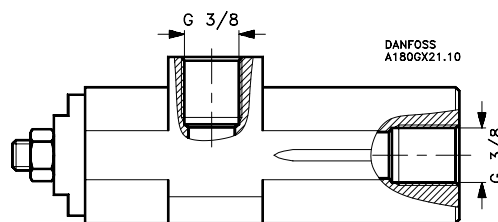
Mit Stahlunterlagsscheibe: 30 Nm (270 lbs in)

**Gevindestørrelse**

**Thread size**

**Gewindegröße**

**Dimensions des filetage**



DANFOSS  
A180GX21.10