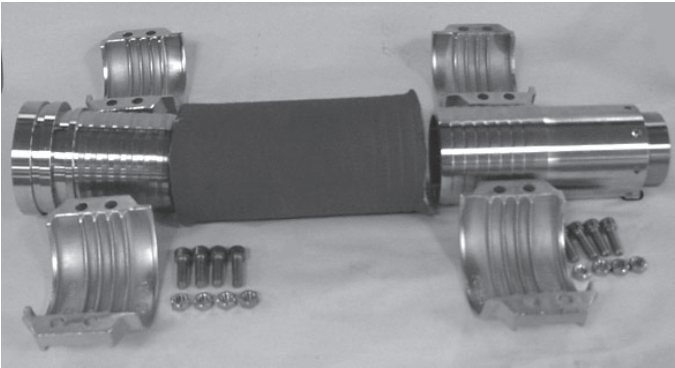


This instruction covers the assembly of the low pressure hose for the APP21-26 pumps.

⚠ Warning: The hose is armed with steel wires. It may be sharp!

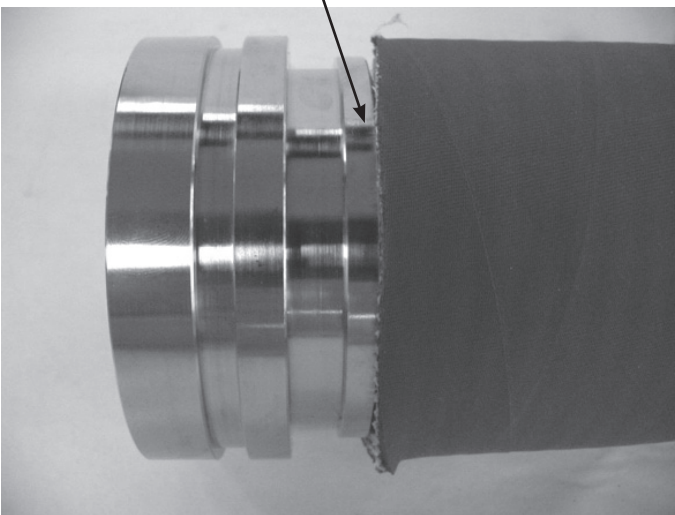
3" low pressure hose kit:



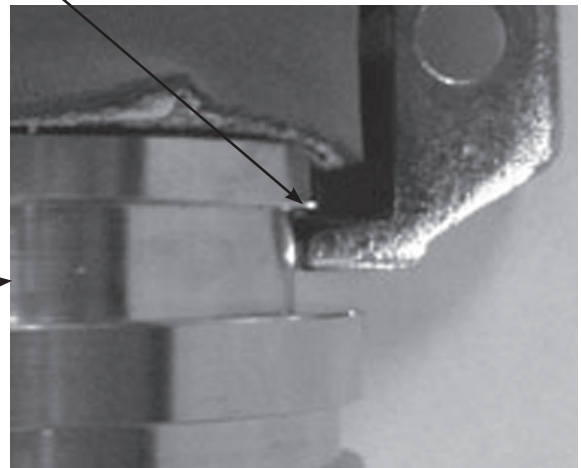
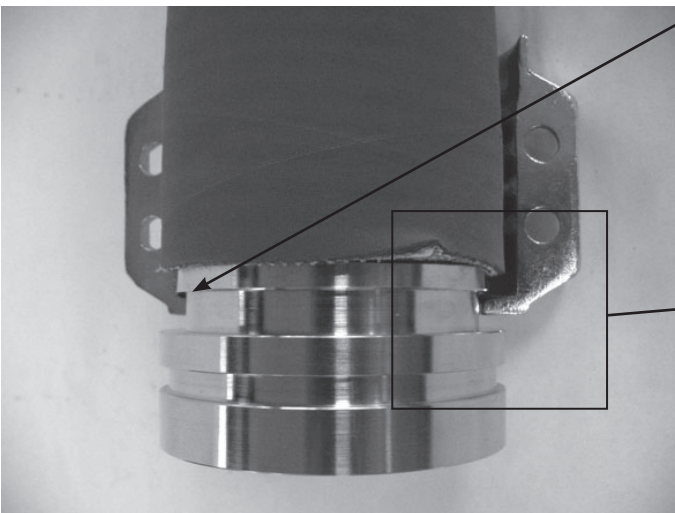
- 1 pc. 3" hose tail with 3" Victaulic®
- 1 pc. 3" hose tail with M60x1.5
- 1 pc. O-ring
- 2 sets 3" hose clamps
- 8 bolts
- 8 nuts
- 2 m (78.7 inches) 3" low pressure hose

It is essential that all parts are absolutely clean.

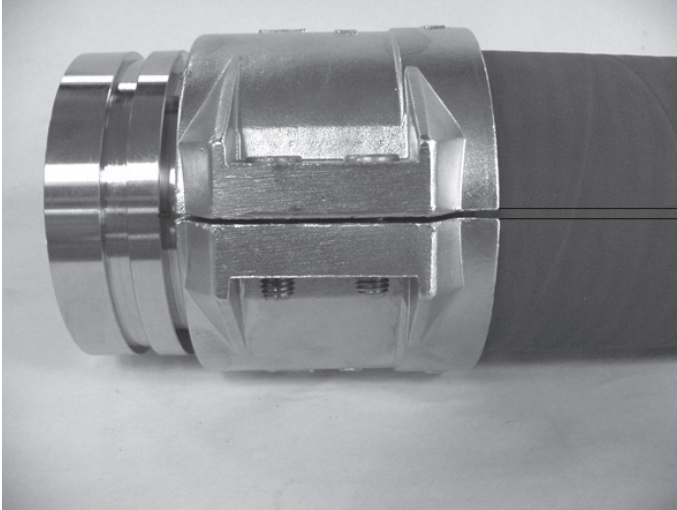
1. Press the hose up against the shoulder of the hose tail.



2. Fit both hose clamps so that the shoulders of the hose clamps grip around the shoulder of the hose tail.

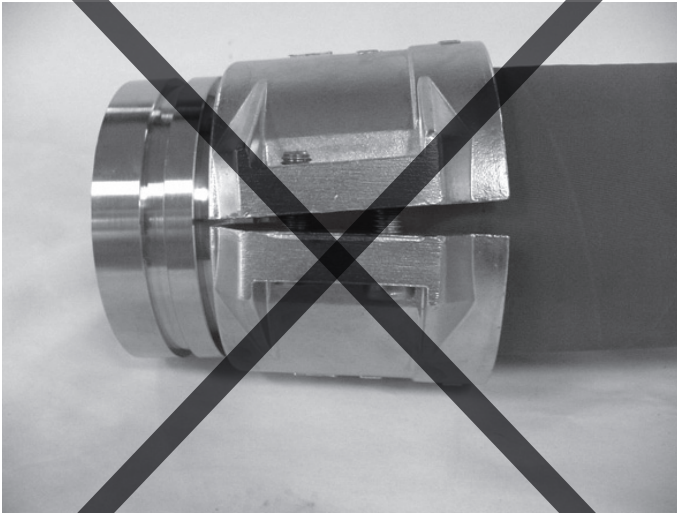


- Lubricate the bolts with grease or soap and screw them through the hose clamps into the nuts using a 6 mm Allen key.
- Tighten the bolts to the maximum and ensure that the clamps are fitted together tightly as shown in the picture below.



Correct

Max. 1 mm



Wrong

- Once the assembly is completed, check that the bolts are tightened to the maximum.
- Check the bolts each time the plant is expected.
- Lubricate the O-ring with grease or soap and mount it on the hose tail with M60x1.5.

